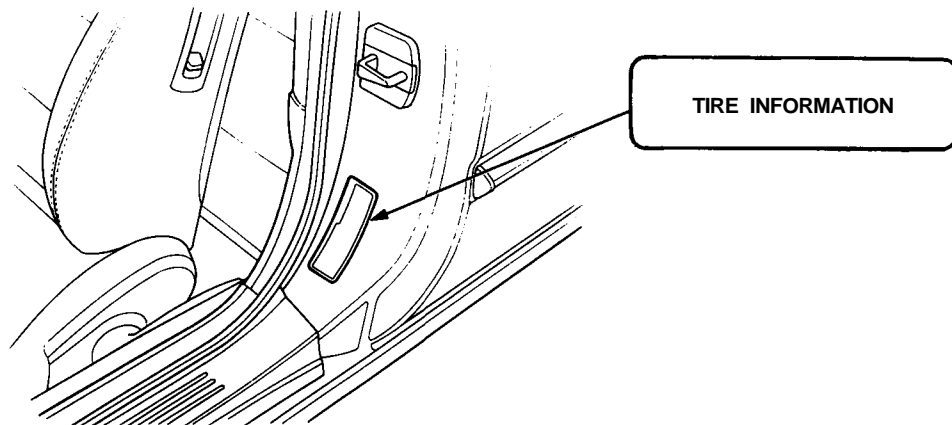
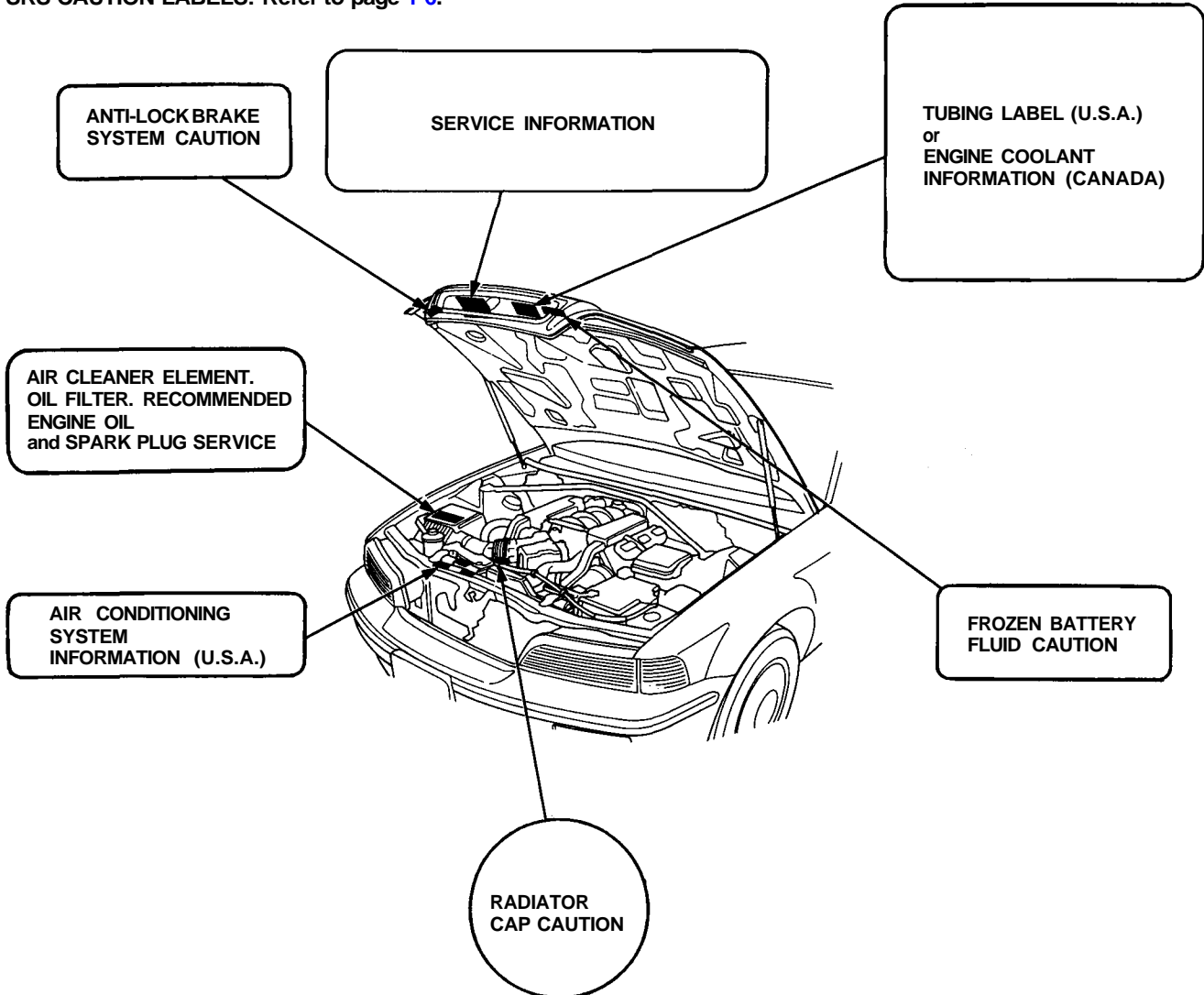


Warning/Caution Label Locations



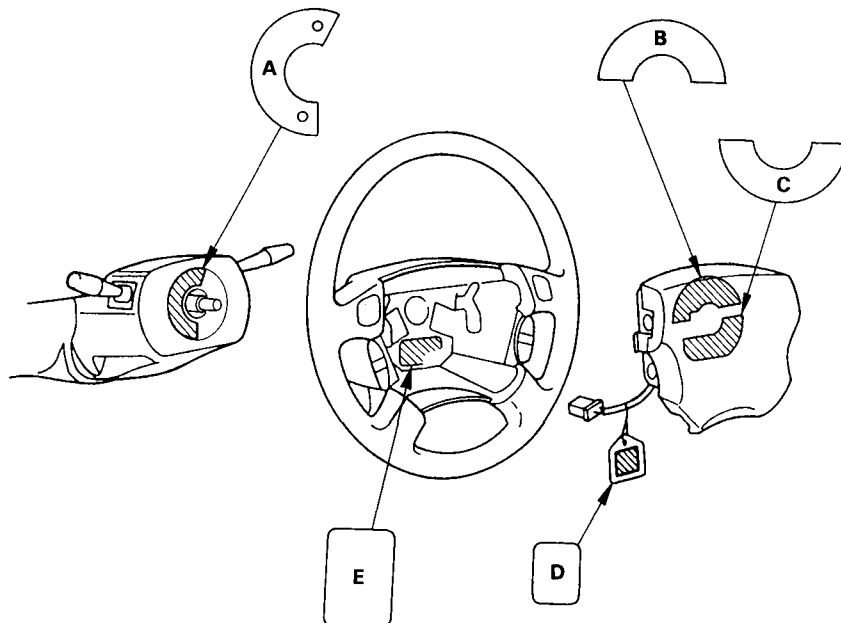
SRS CAUTION LABELS: Refer to page 1-6.



(cont'd)

Warning/Caution Label Locations

(cont'd)



A: CABLE REEL CAUTION A

SRS

REFER TO SERVICE MANUAL FOR DETAILED INSTRUCTIONS.

B: DRIVER MODULE DANGER

⚠ DANGER

EXPLOSIVE/FLAMMABLE

CONTACT WITH ACID, WATER OR HEAVY METALS SUCH AS COPPER. LEAD OR MERCURY MAY PRODUCE HARMFUL AND IRRITATING GASES OR EXPLOSIVE COMPOUNDS. STORAGE TEMPERATURES MUST NOT EXCEED 200°F (100°C). FOR PROPER HANDLING, STORAGE AND DISPOSAL PROCEDURES REFER TO SERVICE MANUAL, SRS SUPPLEMENT.

POISON

CONTAINS POISONOUS SODIUM AZIDE AND POTASSIUM NITRATE.

FIRST AID

IF CONTENTS ARE SWALLOWED. INDUCE VOMITING. FOR EYE CONTACT, FLUSH EYES WITH WATER FOR 15 MINUTES. IF GASES (FROM ACID OR WATER CONTACT) ARE INHALED, SEEK FRESH AIR. IN EVERY CASE, GET PROMPT MEDICAL ATTENTION. KEEP OUT OF REACH OF CHILDREN.

C: DRIVER MODULE WARNING

⚠ WARNING

THE AIRBAG INFLATOR IS EXPLOSIVE AND, IF ACCIDENTALLY DEPLOYED, CAN SERIOUSLY HURT OR KILL YOU.

- DO NOT USE ELECTRICAL TEST EQUIPMENT OR PROBING DEVICES. THEY CAN CAUSE ACCIDENTAL DEPLOYMENT.
- NO SERVICEABLE PARTS INSIDE. DO NOT DISASSEMBLE.
- PLACE AIRBAG UPRIGHT WHEN REMOVED.
- FOLLOW SERVICE MANUAL INSTRUCTIONS CAREFULLY.

D: DRIVER INFLATOR WARNING TAG

⚠ WARNING

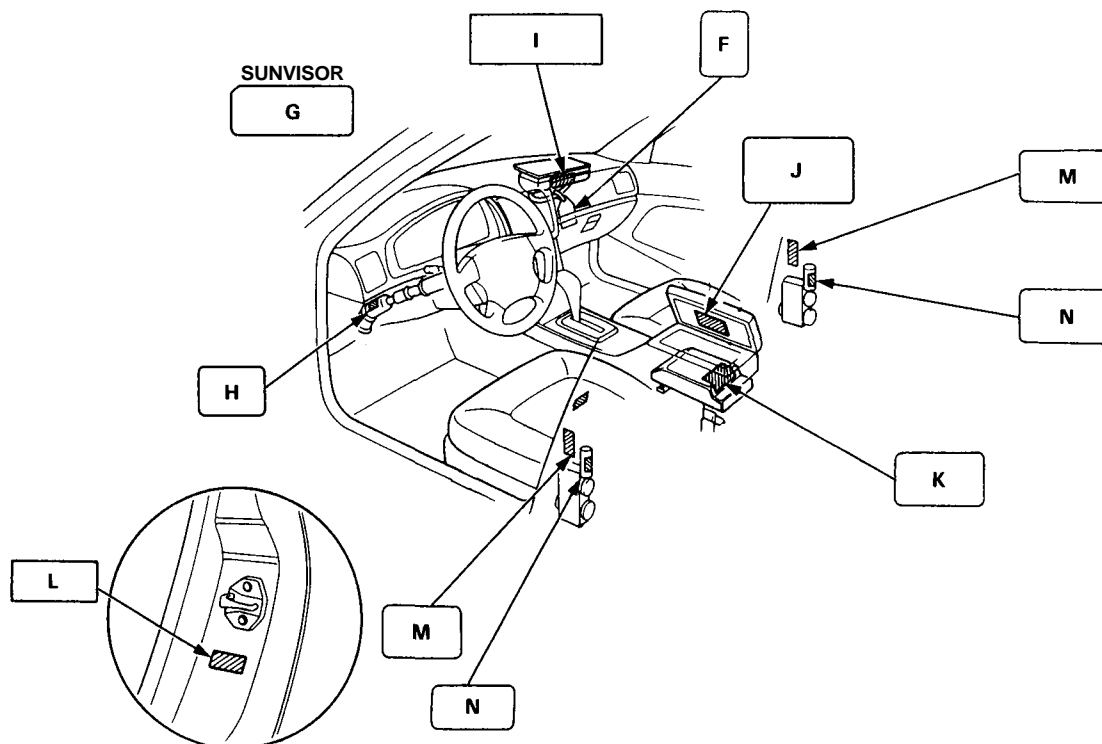
ACCIDENTAL AIRBAG DEPLOYMENT CAN SERIOUSLY HURT OR KILL YOU.

INSTALL THE RED SERVICE CONNECTOR WHEN THE INFLATOR HARNESS IS DISCONNECTED.

E: STEERING WHEEL NOTICE

NOTICE

IMPROPER STEERING WHEEL REMOVAL OR INSTALLATION CAN DAMAGE SRS COMPONENTS. FOLLOW SERVICE MANUAL INSTRUCTION CAREFULLY.



F: FRONT SEAT PASSENGER INFLATOR WARNING TAG

⚠ WARNING
ACCIDENTAL AIRBAG DEPLOYMENT CAN SERIOUSLY HURT OR KILL YOU.
INSTALL THE RED SERVICE CONNECTOR WHEN THE INFLATOR HARNESS IS DISCONNECTED.

G: DRIVER INFORMATION

SRS ALWAYS WEAR YOUR SEAT BELT
● THIS CAR IS EQUIPPED WITH A DRIVER AIRBAG AND A FRONT SEAT PASSENGER AIRBAG AS A SUPPLEMENTAL RESTRAINT SYSTEM (SRS).
● IT IS DESIGNED TO SUPPLEMENT THE SEAT BELT.
● BEFORE DRIVING READ LABEL INSIDE THE CONSOLE BOX.

H: STEERING COLUMN NOTICE

NOTICE
TO PREVENT SRS DAMAGE, REMOVE STEERING WHEEL BEFORE REMOVING STEERING SHAFT CONNECTING BOLT.

I: FRONT SEAT PASSENGER AIRBAG MODULE COVER LABEL

⚠ DANGER
EXPLOSIVE/FLAMMABLE
CONTACT WITH ACID. WATER OR HEAVY METALS SUCH AS COPPER, LEAD OR MERCURY MAY PRODUCE HARMFUL AND IRRITATING GASES OR EXPLOSIVE COMPOUNDS. STORAGE TEMPERATURES MUST NOT EXCEED 200°F (100°C). FOR PROPER HANDLING, STORAGE, AND DISPOSAL PROCEDURES REFER TO SERVICE MANUAL. SRS SUPPLEMENT.
POISON
CONTAINS POISONOUS SODIUM AZIDE AND POTASSIUM NITRATE.
FIRST AID
IF CONTENTS ARE SWALLOWED, INDUCE VOMITING. FOR EYE CONTACT, FLUSH EYES WITH WATER FOR 15 MINUTES. IF GASES (FROM ACID OR WATER CONTACT) ARE INHALED, SEEK FRESH AIR. IN EVERY CASE, GET PROMPT MEDICAL ATTENTION.
KEEP OUT OF REACH OF CHILDREN.

⚠ WARNING
THE AIRBAG INFLATOR IS EXPLOSIVE AND, IF ACCIDENTALLY DEPLOYED, CAN SERIOUSLY HURT OR KILL YOU.
● DO NOT USE ELECTRICAL TEST EQUIPMENT OR PROBING DEVICES. THEY CAN CAUSE ACCIDENTAL DEPLOYMENT.
● NO SERVICEABLE PARTS INSIDE. DO NOT DISASSEMBLE.
● PLACE AIRBAG UPRIGHT WHEN REMOVED.
● FOLLOW SERVICE MANUAL INSTRUCTIONS CAREFULLY.

(cont'd)

Warning Caution Label Locations

(cont'd)

J: SRS CONSOLE LABEL

AIRBAG INFORMATION

SUPPLEMENTAL RESTRAINT SYSTEM (SRS)

- THE SRS MUST BE INSPECTED TEN YEARS AFTER IT IS INSTALLED. THE DATE OF INSTALLATION IS SHOWN ON THE CERTIFICATION PLATE, LOCATED ON THE DRIVER'S DOORJAMB.
- DIAGNOSTIC CHECKS AND REPLACEMENT OF SRS COMPONENTS MUST BE DONE BY AN AUTHORIZED DEALER.
- SEE YOUR OWNER'S MANUAL FOR ADDITIONAL SRS INFORMATION.

K: MONITOR NOTICE

NOTICE: **SRS**

- NO SERVICEABLE PARTS INSIDE.
- REFER TO SERVICE MANUAL FOR DETAILED INSTRUCTIONS.

L: LABEL

AIRBAG

M: PRETENSIONER ELR LABEL

⚠ WARNING

EXPLOSIVE MATERIAL INSIDE

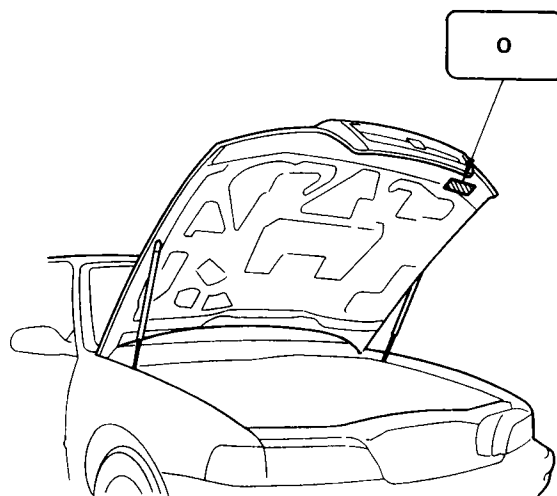
YOU CAN BE SERIOUSLY HURT OR BURNED.

- INSTALL RED SHORT CONNECTOR WHEN WIRE HARNESS IS DISCONNECTED.
- DO NOT TAMPER OR DISASSEMBLE. NO SERVICEABLE PARTS INSIDE.
- USE ONLY APPROVED ELECTRICAL TESTERS FOR CIRCUIT DIAGNOSIS.
- REFER TO SERVICE MANUAL FOR COMPLETE INSTRUCTIONS.

N: PRETENSIONER POWER SOURCE CAUTION

SEAT BELT TENSIONER

DO NOT TAMPER, REFER TO SERVICE MANUAL FOR COMPLETE INSTRUCTIONS.



O: SRS WARNING (HOOD)

SUPPLEMENTAL RESTRAINT SYSTEM [SRS]

THIS VEHICLE IS EQUIPPED WITH DRIVER AND FRONT SEAT PASSENGER AIRBAGS AND FRONT SEAT BELT TENSIONER SYSTEMS.

ALL SRS ELECTRICAL WIRING AND CONNECTORS ARE COLORED YELLOW.

TAMPERING WITH, DISCONNECTING OR USING ELECTRICAL TEST EQUIPMENT ON THE SRS WIRING CAN MAKE THE SYSTEM INOPERATIVE OR CAUSE ACCIDENTAL FIRING OR THE INFLATOR.

⚠ WARNING

THE AIRBAG INFLATOR IS EXPLOSIVE AND, IF ACCIDENTALLY DEPLOYED, CAN SERIOUSLY HURT YOU. FOLLOW SERVICE MANUAL INSTRUCTIONS CAREFULLY.